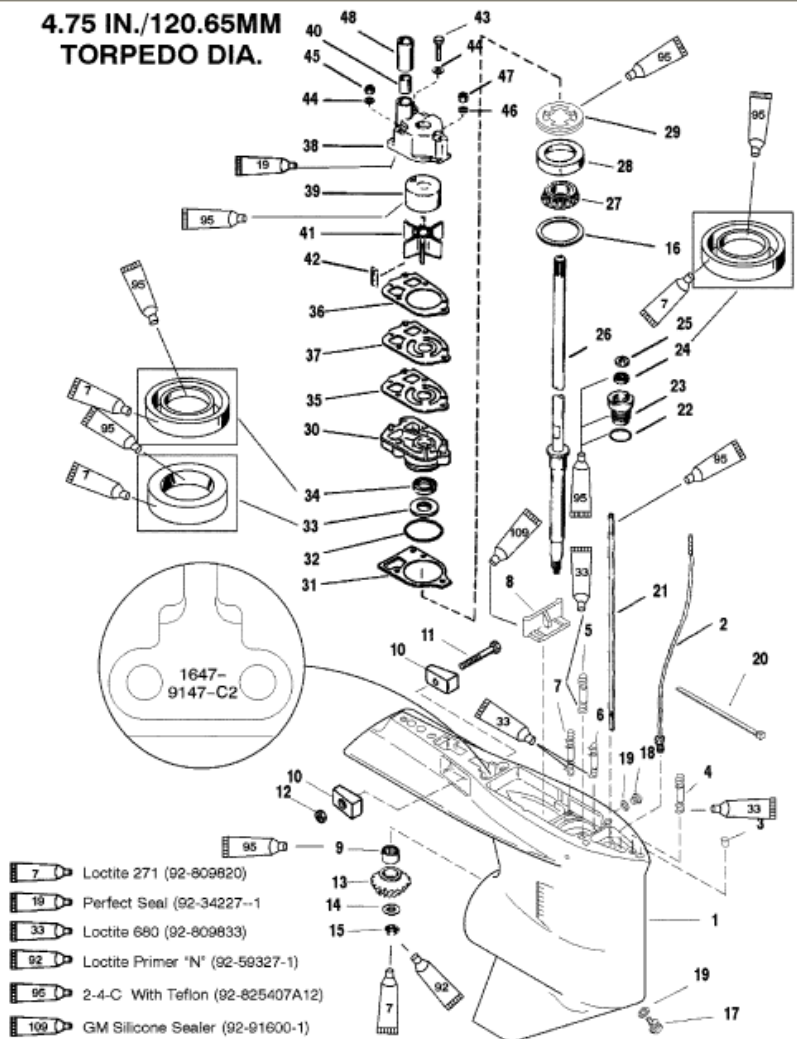


**4.75 IN./120.65MM
 TORPEDO DIA.**



- Loctite 271 (92-809820)
- Perfect Seal (92-34227--1)
- Loctite 680 (92-809833)
- Loctite Primer "N" (92-59327-1)
- 2-4-C With Teflon (92-825407A12)
- GM Silicone Sealer (92-91600-1)

Parts List

Ref	Class	Part	Description	Qty	Comment	Footnote
1	1647	9148T93	GEAR HOUSING	1	(BLACK)(BASIC)	
2	22	85822A10	CONNECTOR ASSEMBLY	1		
3	17	43044	DOWEL PIN	2		
4	16	18978 3	STUD (3-11/16 IN.)	1		
5	16	57920 3	STUD (2-1/16 IN.)	2		
6	16	56297 2	STUD (3-3/8 IN.)	1		
7	16	30667	STUD (3-1/8 IN.)	2		
8		67891	FILLER BLOCK	1		
9	31	42647A 1	ROLLER BEARING	1		
10		826134	ANODE	2		
11	10	40003 33	SCREW	1		
12	11	826833 6	NUT	1		
13		NSS	PINION GEAR(PART OF 43-82870	1	(1.87:1GEAR RATIO-15TEETH)	5
14	12	92721	WASHER	1	INCLUDED WITH FORWARD GE	
15	11	35921	NUT	1	INCLUDED WITH FORWARD GE	
16	15	42637A 1	SHIM SET	AR	INCLUDED WITH FORWARD GE	6
17	22	67892A 1	SCREW-DRAIN (MAGNETIC)	1		
18	10	79953A 2	SCREW-GREASE FILLER	1		
19	12	19183	WASHER	2		10,8
20		56762	STA-STRAP	1		
21		78902 2	SHIFT SHAFT	1		
22	25	25439	O-RING	1		4,8
23	23	77631A 2	BUSHING ASSEMBLY	1		8
24	26	816464 1	OIL SEAL	1		8
25	12	77674	WASHER-RUBBER	1		
26	45	44209 1	DRIVE SHAFT	1		
27	31	36387A 1	ROLLER BEARING	1		
28		NSS	CUP	1		5
29		824519	RETAINER	1		
30	46	42579A 3	WATER PUMP BASE	1		
31	27	42631 1	GASKET	1		4,10,8
32	25	90011	O-RING	1		4,10,8
33	26	89238	OIL SEAL	1		8
34	26	16977	OIL SEAL	1		8
35	27	85608 1	GASKET-LOWER	1		4,10,8
36	27	85609 1	GASKET-UPPER	1		4,10,8
37		32435	FACE PLATE	1		10
38	46	96148A 1	WATER PUMP BODY ASSEMBLY	1		10
39		48752T	INSERT	1		10
40	26	38970	SEAL-RUBBER	1		4,10,8
41	47	99984 2	IMPELLER	1		10